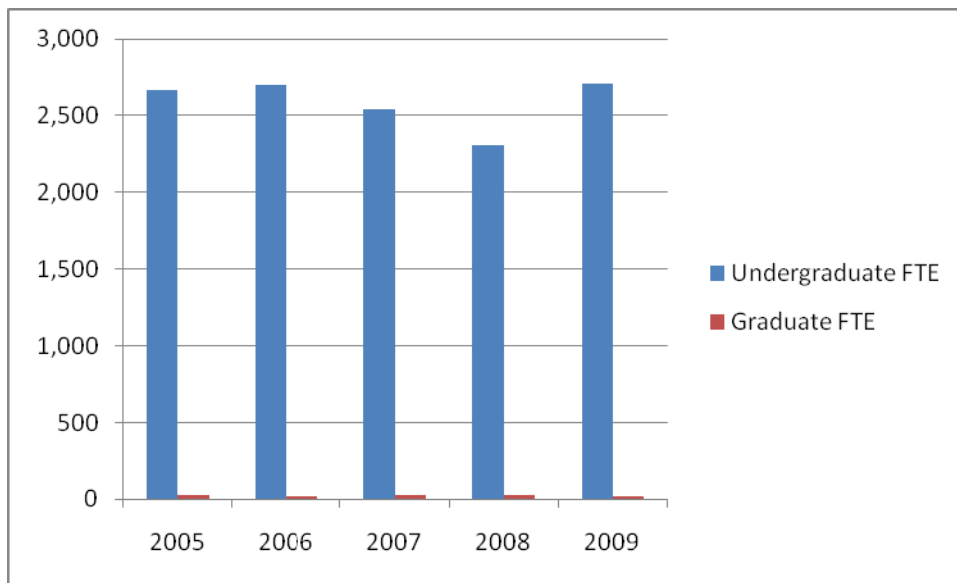


FTE Enrollment

Fall Semester	2005	2006	2007	2008	2009
Undergraduate FTE	2,670	2,704	2,545	2,312	2,710
Graduate FTE	24	23	25	25.67	23
Total FTE	2,694	2,727	2,570	2,911	2,733

Note: One graduate FTE is equal to twelve credit hours. One undergraduate FTE is equal to 15 credit hours.

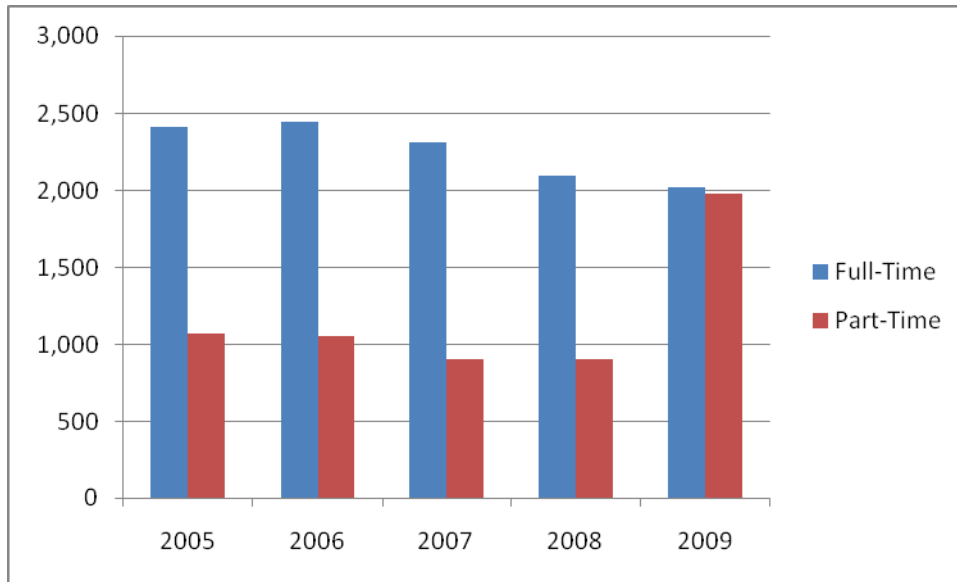
Total FTE Enrollment



Enrollment by Full-/Part Time Status

Fall Semester	2005	2006	2007	2008	2009
Full-Time	2,418	2,448	2,314	2,097	2,023
Part-Time	1,073	1,054	904	906	1,980
Total	3,491	3,502	3,218	3,003	4,003

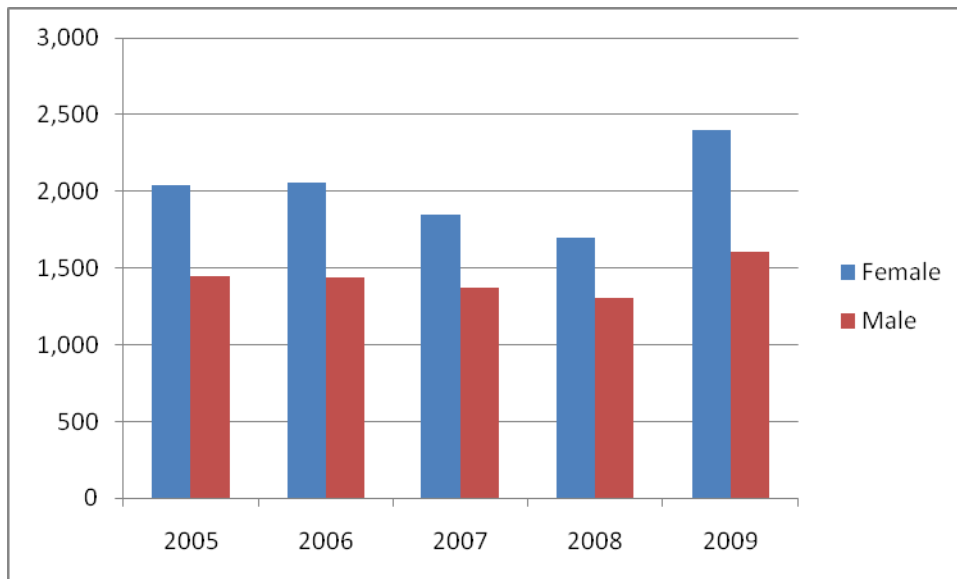
Enrollment by Full-/Part Time Status



Enrollment by Gender

Fall Semester	2005	2006	2007	2008	2009
Female	2,041	2,061	1,847	1,697	2,399
Male	1,450	1,441	1,371	1,306	1,604
Total	3,491	3,502	3,218	3,003	4,003

Enrollment by Gender



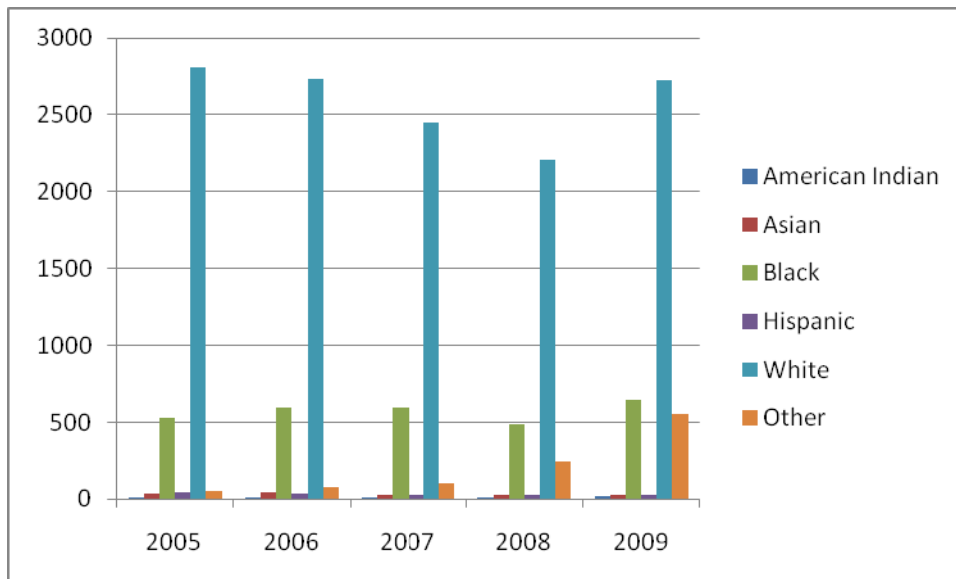
Enrollment by Gender and Graduate Status

Fall Semester	2005	2006	2007	2008	2009
Undergraduate Female	2,024	2,039	1,822	1,674	2,373
Graduate Female	17	22	25	23	26
Total Female	2,041	2,061	1,847	1,697	2,399
Undergraduate Male	1,431	1,426	1,353	1,287	1,580
Graduate Male	19	15	18	19	24
Total Male	1,450	1,441	1,371	1,306	1,604
Grand Total	3,491	3,502	3,218	3,003	4,003

Enrollment by Race

Fall Semester	2005	2006	2007	2008	2009
American Indian	15	15	13	10	18
Asian	39	41	31	31	29
Black	531	597	598	484	644
Hispanic	41	34	28	29	30
White	2,808	2,736	2,448	2,206	2,725
Other	57	79	100	243	557
Total	3,491	3,502	3,218	3,003	4,003

Enrollment by Race



Undergraduate Enrollment by Race

Fall Semester	2005	2006	2007	2008	2009
American Indian	15	15	13	10	18
Asian	35	37	27	28	25
Black	525	588	586	476	639
Hispanic	41	34	28	28	29
White	2,784	2,713	2,422	2,179	2,691
Other	55	78	99	240	551
Total	3,455	3,465	3,175	2,961	3,953

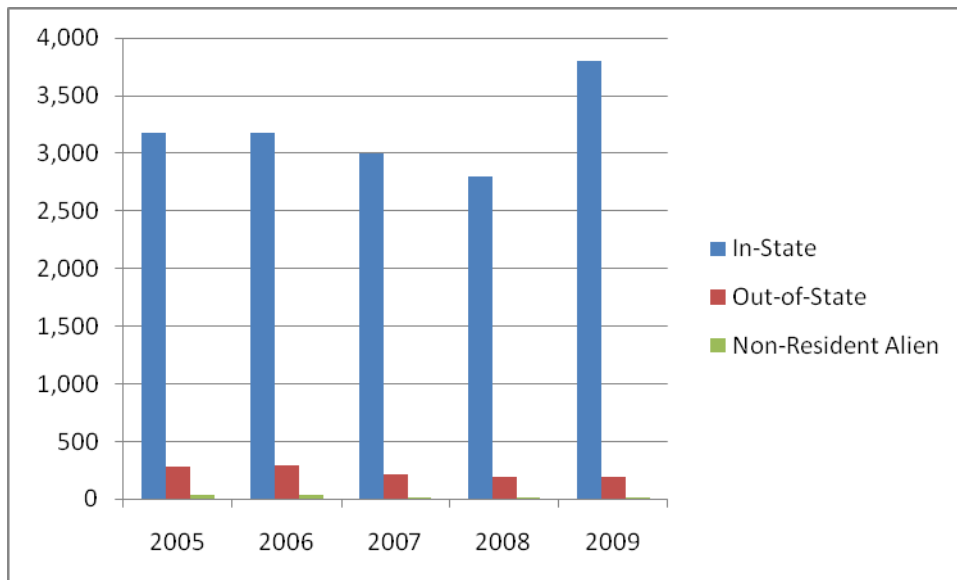
Graduate Enrollment by Race

Fall Semester	2005	2006	2007	2008	2009
American Indian	0	0	0	0	0
Asian	4	4	4	3	4
Black	6	9	12	8	5
Hispanic	0	0	0	1	1
White	24	23	26	27	34
Other	2	1	1	3	6
Total	36	37	43	42	50

Out-of-/In-State Enrollment

Fall Semester	2005	2006	2007	2008	2009
In-State	3,175	3,174	2,997	2800	3,796
Out-of-State	284	293	211	197	196
Non-Resident Alien	32	35	10	6	11
Total	3,491	3,502	3,218	3,003	4,003

Out-of-/In-State Enrollment



Undergraduate Out-of-/In-State Enrollment

Fall Semester	2005	2006	2007	2008	2009
In-State	3,147	3,145	2,959	2,800	3,712
Out-of-State	282	291	210	155	234
Non-Resident Alien	26	29	6	6	7
Total	3,455	3,465	3,175	2,961	3,953

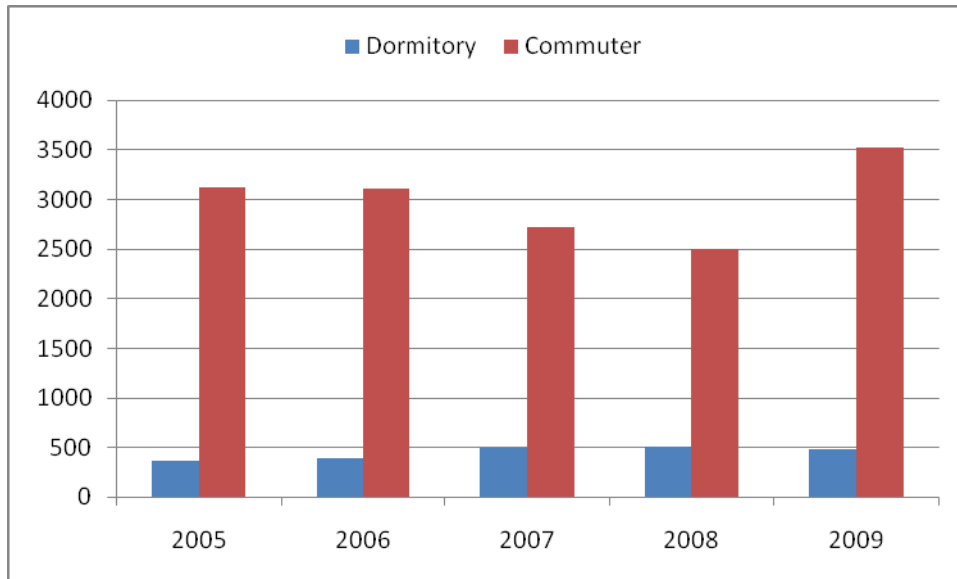
Graduate Out-of-State/In-State Enrollment

Fall Semester	2005	2006	2007	2008	2009
In-State	28	29	38	35	38
Out-of-State	2	2	1	1	4
Non-Resident Alien	6	6	4	6	8
Total	36	37	43	42	50

Residence Hall/Commuter Enrollment

Fall Semester	2005	2006	2007	2008	2009
Dormitory	368	395	491	507	482
Commuter	3,123	3,107	2,727	2,496	3,521
TOTAL	3,491	3,502	3,218	3,003	4,003

Residence Hall/Commuter Enrollment

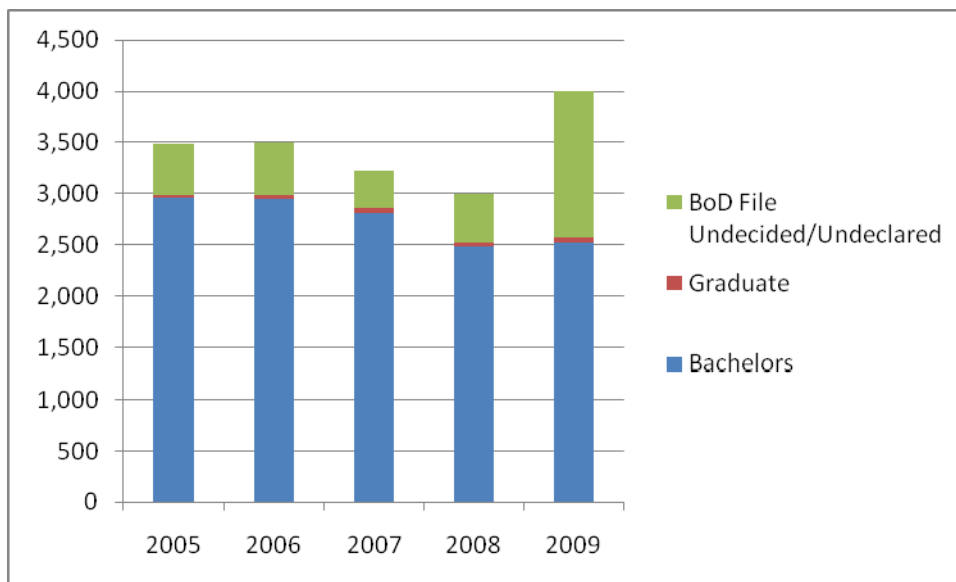


Enrollment by Degree Objective

Fall Semester	2005	2006	2007	2008	2009
Bachelors	2,955	2,952	2,812	2,486	2,524
Graduate	36	37	43	40	50
BoD File Undecided/Undeclared	500	513	363	477	1,429
Total	3,491	3,502	3,218	3,003	4,003

*The Higher Education Policy Commission files count students enrolled in the baccalaureate general education program and certain other programs as undecided/undeclared (see page 56).

Enrollment by Degree Objective



Enrollment by Student Type

Fall Semester	2005	2006	2007	2008	2009
First-Time Freshmen	381	415	391	372	455
Returning Students	1,772	1,675	2,041	1,902	1,942
Readmitted Students	749	791	324	244	245
Transfer Students	186	211	164	86	52
High School Students	290	301	222	331	244
Other	113	109	76	86	1,065*
Total	3,491	3,502	3,218	3,003	4,003

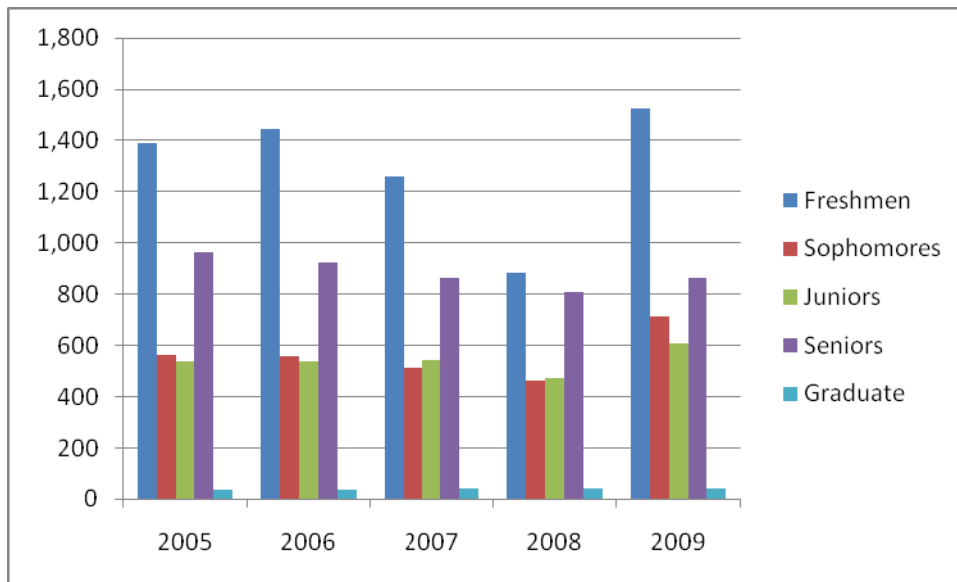
*A total of 984 of these students were KVCTC students taking courses at the University.

Enrollment by Student Level

Fall Semester	2005	2006	2007	2008	2009
Freshmen	1,391	1,446	1,260	885	1,527
Sophomores	565	556	511	464	714
Juniors	536	538	542	474	606
Seniors	963	925	862	806	862
Graduate	36	37	43	42	50
Total	3,491	3,502	3,218	3,003	4,003*

*Total includes 244 unclassified special high school students taking college courses.

Enrollment by Student Level



West Virginia First-Time Freshmen by County

Fall Semester	2005	2006	2007	2008	2009
Barbour	0	0	0	0	0
Berkeley	0	0	0	0	1
Boone	3	6	0	0	0
Braxton	0	0	0	0	0
Brooke	0	0	0	0	0
Cabell	3	0	2	0	0
Calhoun	0	0	0	0	0
Clay	3	5	0	0	0
Doddridge	0	0	0	0	0
Fayette	1	3	0	0	0
Grant	0	0	0	0	0
Greenbrier	0	0	0	0	0
Hancock	0	0	0	0	0
Harrison	1	0	0	0	0
Jackson	1	1	0	0	0
Jefferson	0	0	0	0	0
Kanawha	243	262	363	338	419
Lincoln	4	5	0	0	0
Logan	4	3	0	0	2
Marion	0	0	0	0	0
Mason	0	0	0	0	0
McDowell	2	1	1	0	0
Mercer	0	1	0	0	0
Mingo	1	0	0	0	0

WV First-Time Freshmen by County (cont.)

Fall Semester	2005	2006	2007	2008	2009
Monongalia	0	0	0	0	0
Monroe	0	0	0	0	0
Nicholas	0	2	0	0	0
Ohio	0	0	0	0	0
Pendleton	0	0	0	0	0
Pocahontas	0	0	0	0	0
Preston	0	1	0	0	0
Putnam	44	38	5	5	2
Raleigh	0	3	0	0	0
Randolph	0	0	0	0	0
Ritchie	0	0	0	0	0
Roane	1	1	0	1	0
Summers	0	0	0	0	0
Taylor	0	0	0	0	0
Wayne	0	0	0	0	0
Webster	1	1	0	0	0
Wetzel	0	0	0	0	0
Wirt	0	0	0	0	0
Wood	0	0	0	0	0
Wyoming	0	0	0	0	0
Total WV Residents	312	333	371	344	424
Out-of-State	69	82	20	28	31
Total Entering Freshmen	381	415	391	372	455

West Virginia First Time Freshmen by High School
(With 10 or more students enrolled)

High School	Fall 2009
Capital	26
Herbert Hoover	10
Nitro	36
Poca	10
St. Albans	37
Sissonville	22
South Charleston	30
Winfield High	21
George Washington	16
Hurricane	11
Buffalo High (Putnam)	10
Riverside	22

Note: Students may not have graduated from high school the same year they enrolled in college.

**Fall 2009 First Time Freshmen Average ACT Scores
And High School GPA**

English	19
Mathematics	17.95
Natural Science	19.35
Social Science	20.10
Composite	19.24
High School GPA	2.84