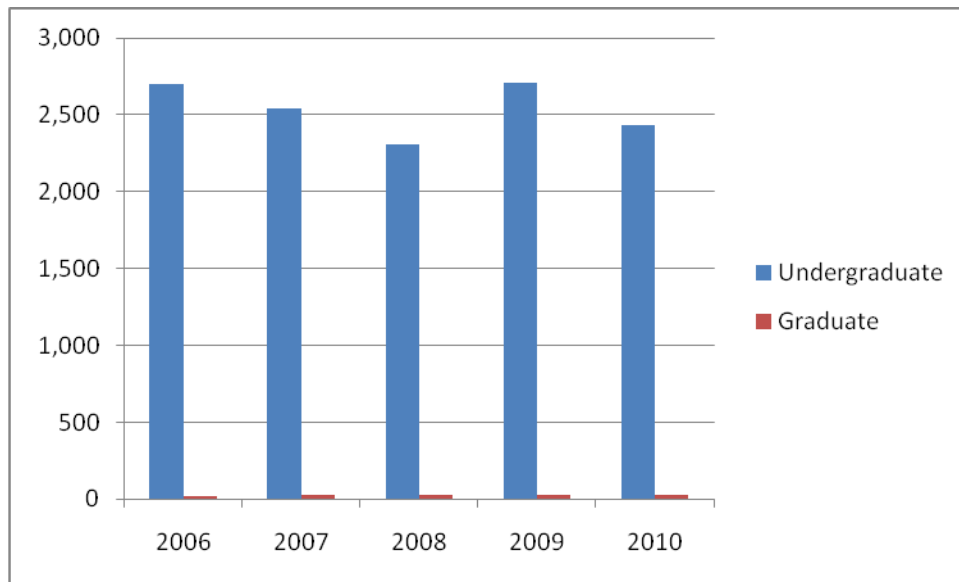


## FTE Enrollment

Fall Semester	2006	2007	2008	2009	2010
Undergraduate FTE	2,704	2,545	2,312	2,710	2,429
Graduate FTE	23	25	25.67	29	29
<b>Total FTE</b>	<b>2,727</b>	<b>2,570</b>	<b>2,338</b>	<b>2,739</b>	<b>2,458</b>

Note: One undergraduate FTE is equal to 15 credit hours. One graduate FTE is equal to twelve credit hours.

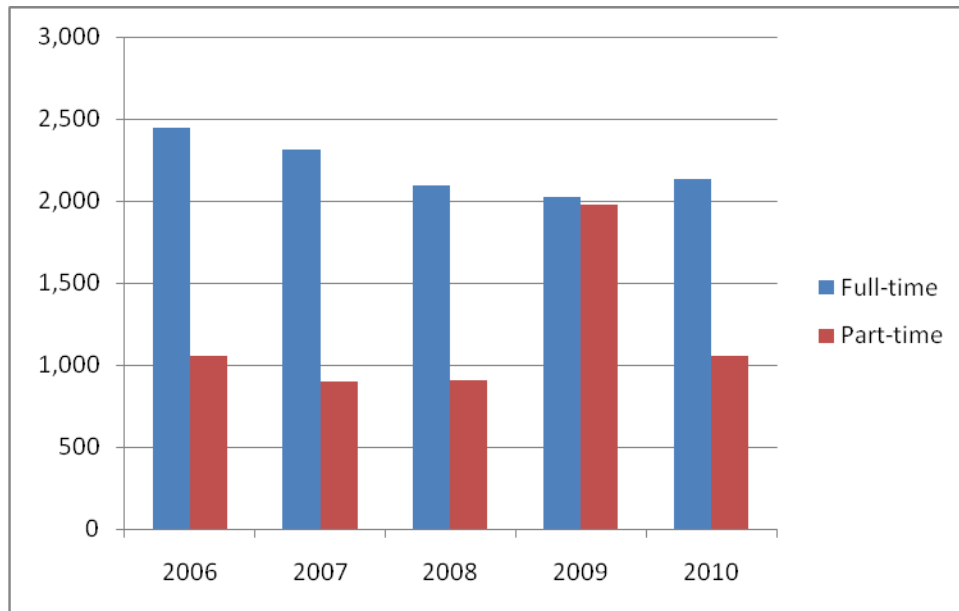
## Total FTE Enrollment



### Enrollment by Full-/Part-Time Status

Fall Semester	2006	2007	2008	2009	2010
Full-Time	2,448	2,314	2,097	2,023	2,133
Part-Time	1,054	904	906	1,980	1,057
<b>Total</b>	<b>3,502</b>	<b>3,218</b>	<b>3,003</b>	<b>4,003</b>	<b>3,190</b>

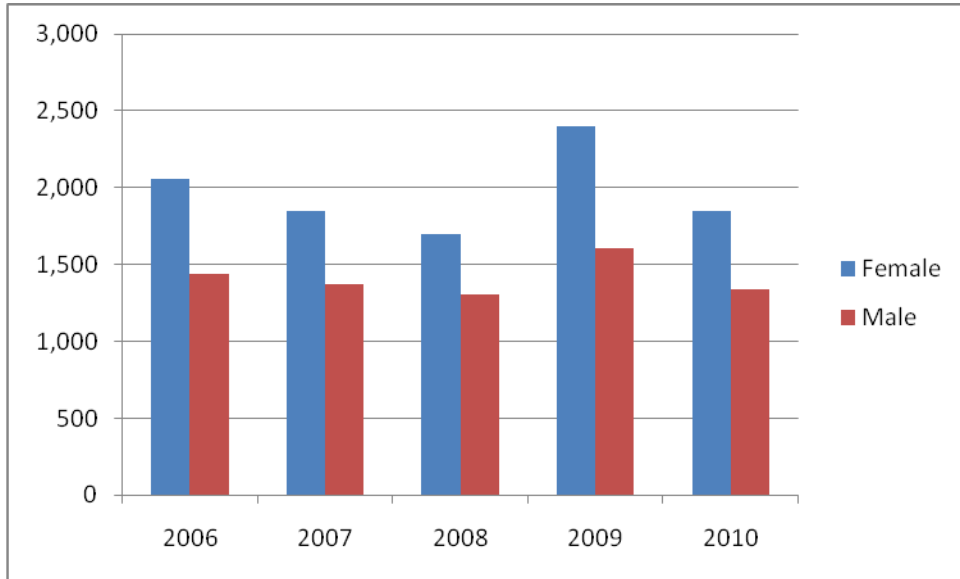
### Enrollment by Full-/Part-Time Status



## Enrollment by Gender

Fall Semester	2006	2007	2008	2009	2010
Female	2,061	1,847	1,697	2,399	1,847
Male	1,441	1,371	1,306	1,604	1,343
Total	3,502	3,218	3,003	4,003	3,190

## Enrollment by Gender



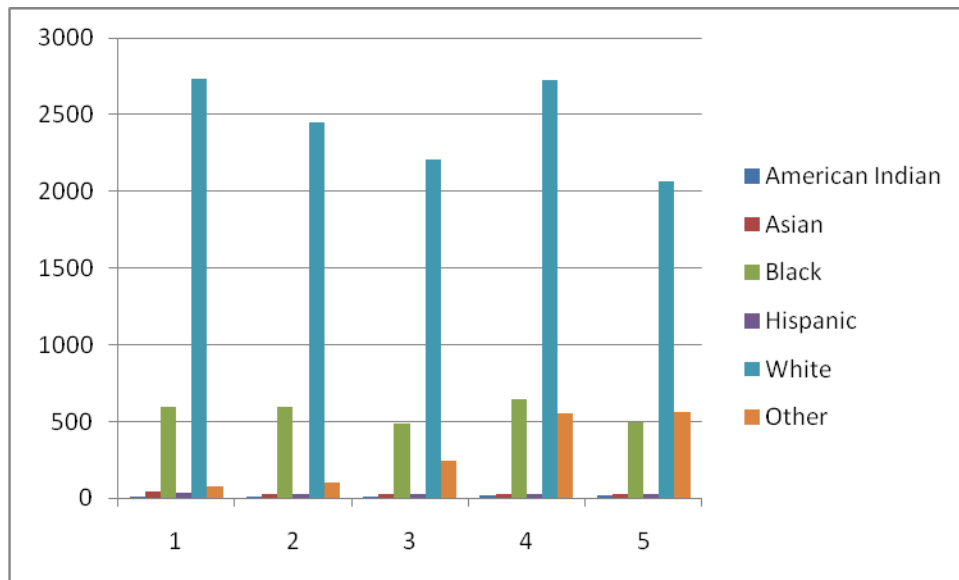
## Enrollment by Gender and Graduate Status

<b>Fall Semester</b>	<b>2006</b>	<b>2007</b>	<b>2008</b>	<b>2009</b>	<b>2010</b>
Undergraduate Female	2,039	1,822	1,674	2,373	1,825
Graduate Female	22	25	23	26	22
<b>Total Female</b>	<b>2,061</b>	<b>1,847</b>	<b>1,697</b>	<b>2,399</b>	<b>1,847</b>
Undergraduate Male	1,426	1,353	1,287	1,580	1,320
Graduate Male	15	18	19	24	23
<b>Total Male</b>	<b>1,441</b>	<b>1,371</b>	<b>1,306</b>	<b>1,604</b>	<b>1,343</b>
<b>Grand Total</b>	<b>3,502</b>	<b>3,218</b>	<b>3,003</b>	<b>4,003</b>	<b>3,190</b>

## Enrollment by Race

Fall Semester	2006	2007	2008	2009	2010
American Indian	15	13	10	18	18
Asian	41	31	31	29	27
Black	597	598	484	644	492
Hispanic	34	28	29	30	25
White	2,736	2,448	2,206	2,725	2,067
Other	79	100	243	557	561
<b>Total</b>	<b>3,502</b>	<b>3,218</b>	<b>3,003</b>	<b>4,003</b>	<b>3,190</b>

## Enrollment by Race



## Undergraduate Enrollment by Race

<b>Fall Semester</b>	<b>2006</b>	<b>2007</b>	<b>2008</b>	<b>2009</b>	<b>2010</b>
American Indian	15	13	10	18	18
Asian	37	27	28	25	23
Black	588	586	476	639	488
Hispanic	34	28	28	29	24
White	2,713	2,422	2,179	2,691	2,037
Other	78	99	240	551	555
<b>Total</b>	<b>3,465</b>	<b>3,175</b>	<b>2,961</b>	<b>3,953</b>	<b>3,145</b>

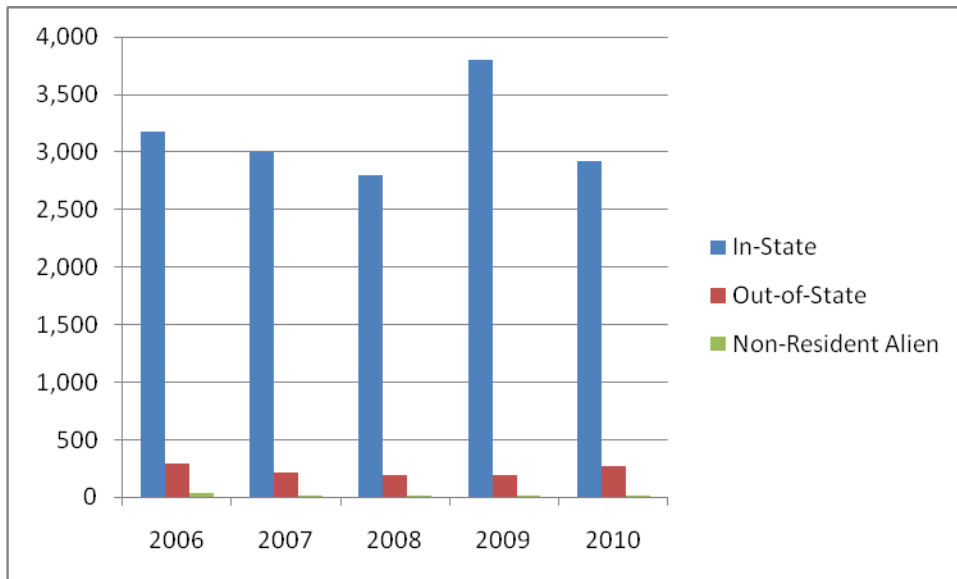
## Graduate Enrollment by Race

<b>Fall Semester</b>	<b>2006</b>	<b>2007</b>	<b>2008</b>	<b>2009</b>	<b>2010</b>
American Indian	0	0	0	0	0
Asian	4	4	3	4	4
Black	9	12	8	5	4
Hispanic	0	0	1	1	1
White	23	26	27	34	30
Other	1	1	3	6	6
<b>Total</b>	<b>37</b>	<b>43</b>	<b>42</b>	<b>50</b>	<b>45</b>

### Out-of-/In-State Enrollment

Fall Semester	2006	2007	2008	2009	2010
In-State	3,174	2,997	2800	3,796	2,917
Out-of-State	293	211	197	196	266
Non-Resident Alien	35	10	6	11	7
<b>Total</b>	<b>3,502</b>	<b>3,218</b>	<b>3,003</b>	<b>4,003</b>	<b>3,190</b>

### Out-of-/In-State Enrollment



### Undergraduate Out-of-/In-State Enrollment

<b>Fall Semester</b>	<b>2006</b>	<b>2007</b>	<b>2008</b>	<b>2009</b>	<b>2010</b>
In-State	3,145	2,959	2,800	3,712	2,882
Out-of-State	291	210	155	234	256
Non-Resident Alien	29	6	6	7	7
<b>Total</b>	<b>3,465</b>	<b>3,175</b>	<b>2,961</b>	<b>3,953</b>	<b>3,145</b>

### Graduate Out-of-State/In-State Enrollment

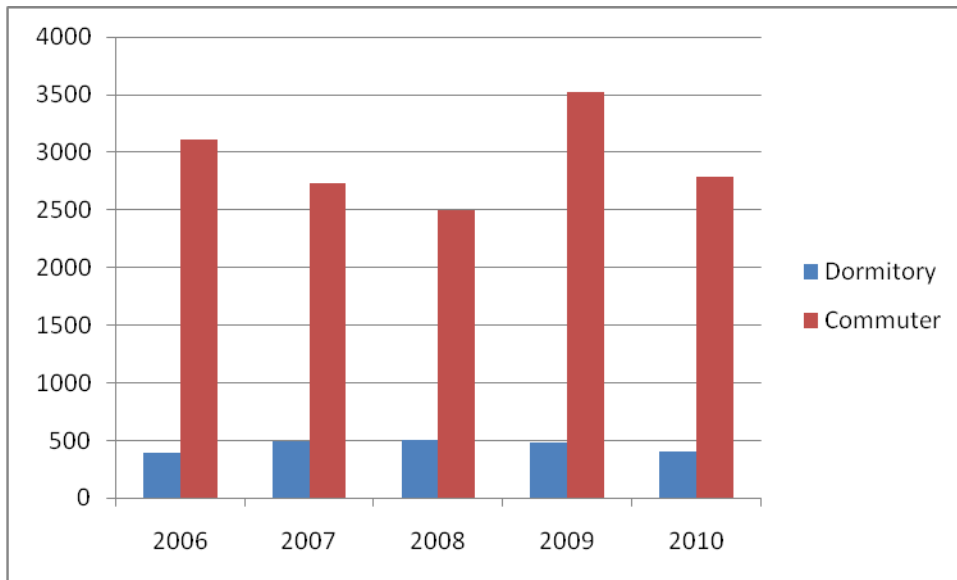
<b>Fall Semester</b>	<b>2006</b>	<b>2007</b>	<b>2008</b>	<b>2009</b>	<b>2010</b>
In-State	29	38	35	38	32
Out-of-State	2	1	1	4	4
Non-Resident Alien	6	4	6	8	9
<b>Total</b>	<b>37</b>	<b>43</b>	<b>42</b>	<b>50</b>	<b>45</b>



## Residence Hall/Commuter Enrollment

Fall Semester	2006	2007	2008	2009	2010
Dormitory	395	491	507	482	403
Commuter	3,107	2,727	2,496	3,521	2,787
<b>TOTAL</b>	<b>3,502</b>	<b>3,218</b>	<b>3,003</b>	<b>4,003</b>	<b>3,190</b>

## Residence Hall/Commuter Enrollment

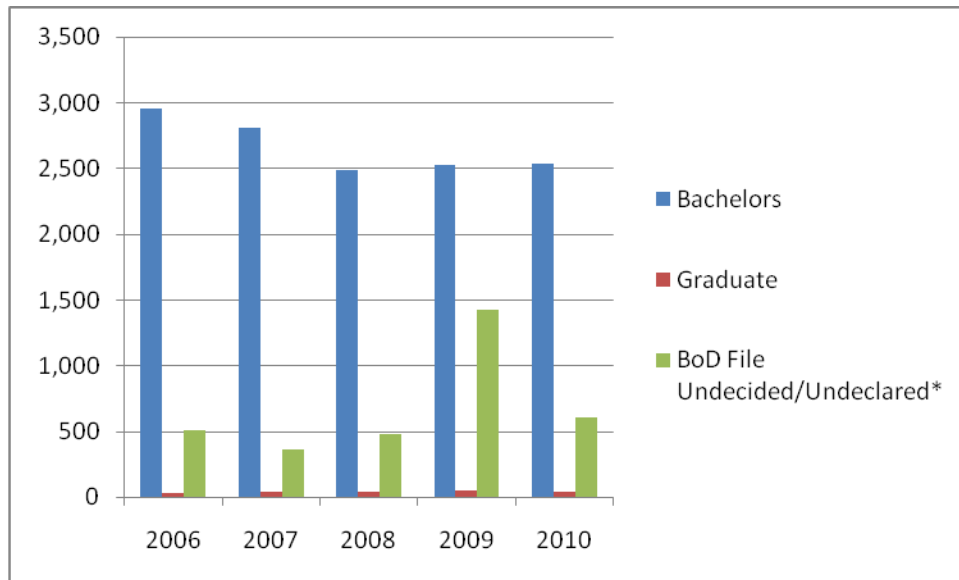


## Enrollment by Degree Objective

Fall Semester	2006	2007	2008	2009	2010
Bachelor's	2,952	2,812	2,486	2,524	2,534
Graduate	37	43	40	50	45
BoD File Undecided/Undeclared*	513	363	477	1,429	611
<b>Total</b>	<b>3,502</b>	<b>3,218</b>	<b>3,003</b>	<b>4,003</b>	<b>3,190</b>

\*The Higher Education Policy Commission files count students enrolled in the baccalaureate general education program and certain other programs as undecided/undeclared (see page 56).

## Enrollment by Degree Objective



### Enrollment by Student Type

<b>Fall Semester</b>	<b>2006</b>	<b>2007</b>	<b>2008</b>	<b>2009</b>	<b>2010</b>
First-Time Freshmen	415	391	372	455	358
Returning Students	1,675	2,041	1,902	1,942	2,100
Readmitted Students	791	324	244	245	108
Transfer Students	211	164	86	52	86
High School Students	301	222	331	244	361
Other	109	76	68	1,065*	177
<b>Total</b>	<b>3,502</b>	<b>3,218</b>	<b>3,003</b>	<b>4,003</b>	<b>3,190</b>

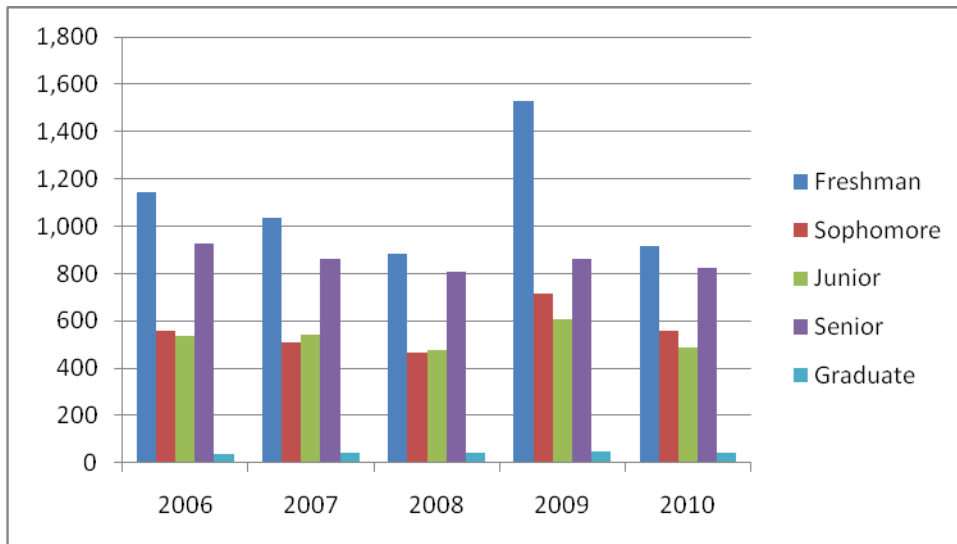
\*A total of 984 of these students were KVCTC students taking courses at the University.

## Enrollment by Student Level

Fall Semester	2006	2007	2008	2009	2010
Freshman	1,446	1,260	885	1,527	915
Sophomore	556	511	464	714	557
Junior	538	542	474	606	490
Senior	925	862	806	862	822
Graduate	37	43	42	50	45
<b>Total*</b>	<b>3,502</b>	<b>3,218</b>	<b>3,003</b>	<b>4,003</b>	<b>3,190</b>

\*Includes unclassified special high school students taking college courses.

## Enrollment by Student Level



## West Virginia First-Time Freshmen by County

Fall Semester	2006	2007	2008	2009	2010
Barbour	0	0	0	0	0
Berkeley	0	0	0	1	0
Boone	6	0	0	0	5
Braxton	0	0	0	0	0
Brooke	0	0	0	0	0
Cabell	0	2	0	0	4
Calhoun	0	0	0	0	0
Clay	5	0	0	0	3
Doddridge	0	0	0	0	0
Fayette	3	0	0	0	0
Grant	0	0	0	0	0
Greenbrier	0	0	0	0	0
Hancock	0	0	0	0	0
Harrison	0	0	0	0	0
Jackson	1	0	0	0	4
Jefferson	0	0	0	0	0
Kanawha	262	363	338	419	206
Lincoln	5	0	0	0	3
Logan	3	0	0	2	9
Marion	0	0	0	0	0
Mason	0	0	0	0	0
McDowell	1	1	0	0	0
Mercer	1	0	0	0	0
Mingo	0	0	0	0	0

**WV First-Time Freshmen by County (cont.)**

<b>Fall Semester</b>	<b>2006</b>	<b>2007</b>	<b>2008</b>	<b>2009</b>	<b>2010</b>
Monongalia	0	0	0	0	0
Monroe	0	0	0	0	0
Nicholas	2	0	0	0	0
Ohio	0	0	0	0	0
Pendleton	0	0	0	0	0
Pocahontas	0	0	0	0	0
Preston	1	0	0	0	0
Putnam	38	5	5	2	59
Raleigh	3	0	0	0	2
Randolph	0	0	0	0	0
Ritchie	0	0	0	0	0
Roane	1	0	1	0	1
Summers	0	0	0	0	0
Taylor	0	0	0	0	0
Wayne	0	0	0	0	2
Webster	1	0	0	0	0
Wetzel	0	0	0	0	0
Wirt	0	0	0	0	0
Wood	0	0	0	0	1
Wyoming	0	0	0	0	0
<b>Total WV Residents</b>	<b>333</b>	<b>371</b>	344	424	299
Out-of-State	82	20	28	31	59
<b>Total Entering Freshmen</b>	<b>415</b>	<b>391</b>	<b>372</b>	<b>455</b>	<b>358</b>

**West Virginia First-Time Freshmen by High School**  
(With 10 or more students enrolled)

High School	Fall 2010
Capital	22
George Washington	14
Herbert Hoover	24
Hurricane	11
Nitro	20
Poca	22
Riverside	14
Sissonville	17
South Charleston	16
St. Albans	27
Winfield High	18

Note: Students may not have graduated from high school the same year they enrolled in college.

**Fall 2010 First-Time Freshmen Average ACT Scores  
And High School GPA**

English	19.24
Mathematics	18.13
Natural Science	19.79
Social Science	20.59
Composite	19.57
<b>High School GPA</b>	<b>2.94</b>